

SPECIFICATIONS

CONVEYOR SPEED: 5 - 15 F.P.M. (10 FPM. VARIABLE)
 TANK CAPACITY: 490 GALLONS
 RINSE LINE CONSUMPTION: 7.8 G.P.M. @ 20 P.S.I. LINE PRESSURE
 STEAM PRESSURE: 15 P.S.I. REQUIRED MAXIMUM

NOTE: STEAM PRESSURE TO THE BOOSTER MUST NOT EXCEED 15 P.S.I.

STEAM CONSUMPTION: 1157 #/HR TOTAL @ 15 P.S.I. (MAX.)
 530 #/HR @ WASH
 627 #/HR @ BOOSTER
 ELECTRICAL: 480V-3PH-60HZ ; 120V-1PH-60HZ
 FLA = 19.1

TANK & UPPER HOUSING: 12 GA #3 POLISHED T-304 STN. STL.
 SPLASH CURTAIN ON UNLOAD END

CUSTOMER NOTE:
 PLEASE VERIFY THAT ALL SHIPPING DIMENSIONS WILL FIT THROUGH ALL DOOR OPENINGS AND PATHWAYS.

NOTE: For extended life of the steam booster, a maximum of 15-PSI steam inlet pressure is required. We highly recommend that a steam pressure-reducing valve be placed in front of the booster's steam inlet connection. The reducing valve is to be provided and installed by others.

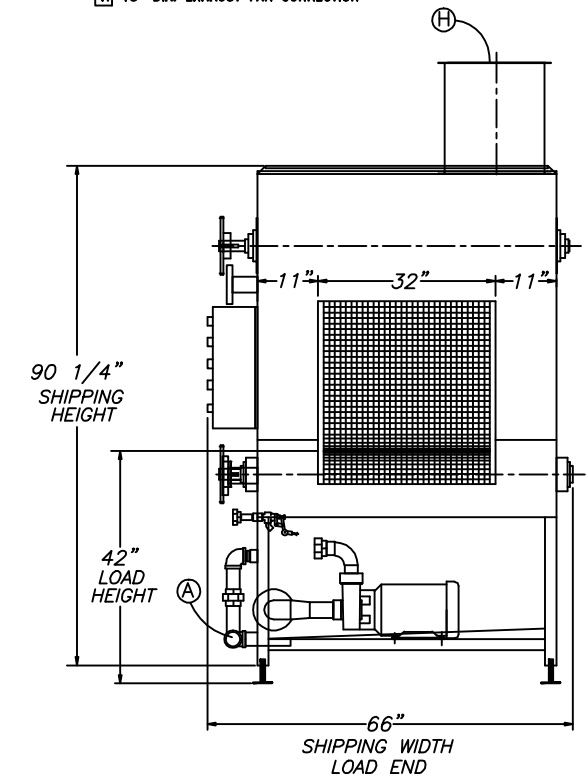
STEAM COIL HEATED TANK WITH STEAM RINSE WATER BOOSTER ON ROOF

CUSTOMER UTILITY CONNECTIONS

- A** 2" DIA. DRAIN FEMALE PIPE CONNECTION
- B** 1 1/4" DIA. BOOSTER WATER INLET FEMALE PIPE CONNECTION
- C** 1 1/2" DIA. TANK WATER FILL FEMALE PIPE CONNECTION
- D** 1 1/2" DIA. TANK STEAM INLET FEMALE PIPE CONNECTION
- E** 1 1/2" DIA. BOOSTER STEAM INLET FEMALE PIPE CONNECTION
- F** 3/4" DIA. BOOSTER CONDENSATE OUTLET FEMALE PIPE CONNECTION
- G** 3/4" DIA. TANK STEAM CONDENSATE OUTLET FEMALE PIPE CONNECTION
- H** 18" DIA. EXHAUST FAN CONNECTION



NOTE: MANUFACTURER RESERVES THE RIGHT OF MODIFICATIONS WITHOUT PRIOR NOTICE.



CONCEPT DRAWING FOR SALES AND ESTIMATING PURPOSES ONLY

SERIAL#		WORK ORDER:	
<p>CONFIDENTIAL PROPRIETARY NOTICE</p> <p>THIS DRAWING, THESE SPECIFICATIONS, AND THE IDEAS CONTAINED HEREIN ARE THE EXCLUSIVE PROPERTY OF ARMOR METAL GROUP ("AMG") AND SHALL BE RETURNED UPON DEMAND. NO PERSON SHALL COPY, USE OR DISCLOSE THIS DRAWING, THESE SPECIFICATIONS, OR THE IDEAS CONTAINED HEREIN WITHOUT THE EXPRESS CONSENT OF AMG.</p> <p>THE ARMOR GROUP www.armormetal.com</p>			
<p>ALVEY WASHING EQUIPMENT AN ARMOR GROUP COMPANY MASON, OHIO</p>		<p>TITLE <u>Dimension sheet for Model CW-101</u> FOR <u>Steam Coil Heated Tank with Booster</u></p>	
DATE <u>9/22/2009</u>	DWN. BY <u>GF</u>	3RD ANGLE	
SCALE <u>None</u>	DWG. NO. <u>CW101-SCHB</u>	CHK. BY _____	

J:\Mecon\Sales\Estimating\Quoles\Prod\2-Deuter\Wey\Wey catalog drawings 2009\CW-101 Steam Coil Heat 2009.dwg