



JOB NO. _____

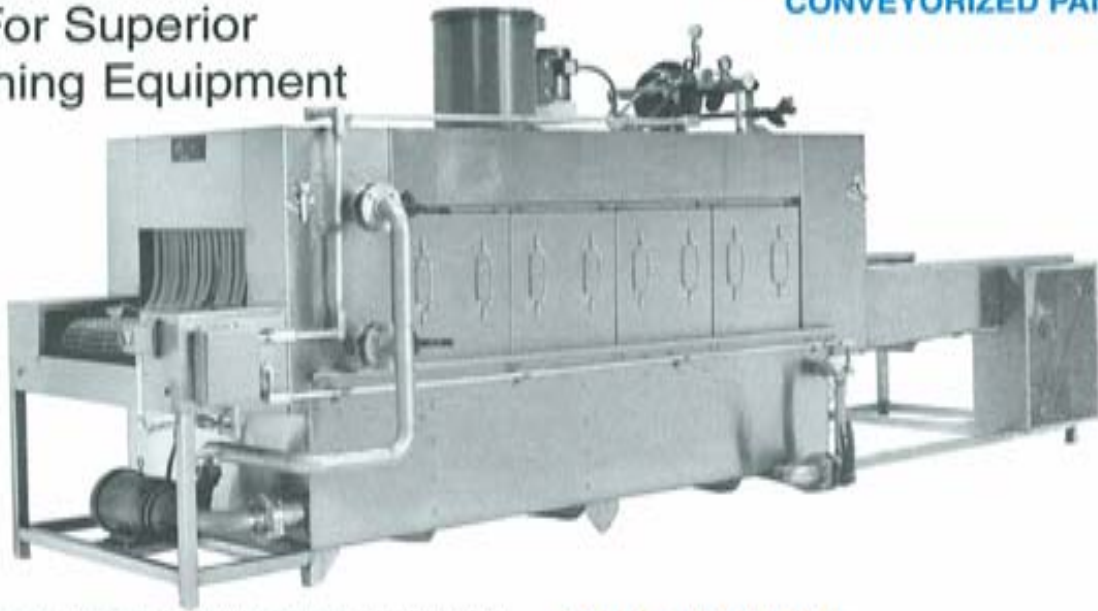
ITEM NO. _____

WASHING EQUIPMENT

Your First Choice
For Superior
Cleaning Equipment

MODEL CW-101

CONVEYORIZED PAN WASHER



THE ALVEY MODEL CW-101 CONVEYORIZED PAN WASHER has been designed for the high production facilities that require pans, baskets and utensils to be thoroughly cleaned with little or no pre-sanitizing or scraping. The unit is designed to process 400 standard sheet pans per hour; however, other items, depending on their size and condition, may be processed at higher or lower rates. Heavy duty construction throughout will provide years of service and dependability.

280V 230V 460V 60cy 3ph

SOLUTION can be heated by

- Steam injector
- Gas burner (natural or propane)
- Electric immersion heaters
- Stainless steel heated coils

WASH PUMP

- 240 G.P.M. at 80 FH
- 10 HP totally enclosed, fan cooled motor, horizontally mounted pump
- Wash spray arms provided with easily removable nozzles and end caps for maintenance and cleaning

Manufacturer reserves the right of modification without any prior notice.



TANK & HOUSING

- Constructed of all welded 12 gauge type 304 stainless steel with a polished finish
- Wash & rinse piping stainless steel with stainless steel nozzles
- Dual stainless steel filter screens
- Lift-off access doors for ease of maintenance and cleaning
- Spray curtains at both load and unload positions

CONTROL PANEL

- UL listed stainless steel panel
- Completely automatic cycle
- Disconnect switch
- Motors completely wired to control panel
- Start/stop push buttons located on control panel
- Indicating pilot lights
- Fresh water solenoid valve wired to photoeye to shut off valuable line rinse water
- Emergency stop stations located at the load & unload end of washer

FEATURES

- Wash temperature and pressure gauges
- Rinse temperature and pressure gauges
- Automatic temperature control
- Rinse line strainer
- Adjustable sanitary feet
- Completely wired and tested
- Automatic floating hold down for light items
- Dual pump pressure throttling valves
- Variable speed drive allows conveyor speed to be adjusted to soil level
- Stainless steel flat wire belt allowing full impact of sprays and a level work surface

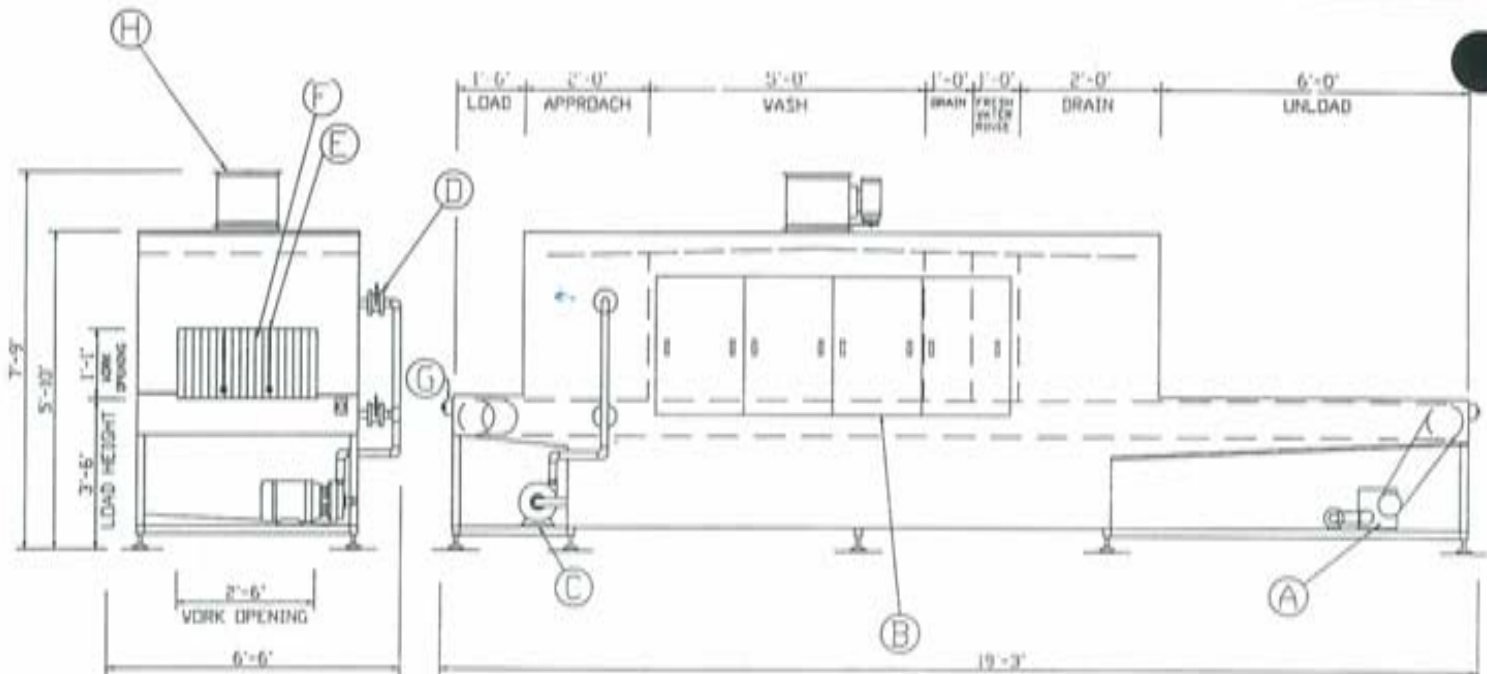
Shipping WT. 10,000 Lbs.

WASHING EQUIPMENT 11337 WILLIAMSON ROAD CINCINNATI, OHIO 45241 513-489-3060 FAX: 513-489-6018

E-Mail: alveysales@afindustries.com • Visit us on the Internet, our address: www.iac.net/~afi/afi.html

Printed in The U.S.A. — 2/97

SPECIFICATIONS AND OPTIONAL EQUIPMENT



NOTES:

1. All dimensions are approximate
2. Control enclosure not shown for clarity
3. Utilities can be located for customer's requirements
4. 208/230/460V-3PH-60HZ standard
5. Available in the following solution heat,
 - A. Steam coil
 - B. Steam injector
 - C. Natural gas
 - D. Electric

COMPONENTS:

- A. Conveyor drive 10 FPM, 5-15 FPM Variable
- B. Lift-off doors, both sides
- C. Wash pump - 10HP
- D. Upper/lower spray pressure valves
- E. Pan hold down guides
- F. Splash curtains
- G. Emergency stop-each end
- H. Optional exhaust fan with internal plenum

The following are selected options available for the Model CW-101.
Please consult Alvey for other options not listed.

OPTIONS

- High impact plastic flat wire conveyor belt
- Steam heated final rinse water booster
- Electric heated final rinse water booster
- Tubeaxial exhaust fan with internal stainless steel plenum
- Insulated wash tank & housing
- High pressure blowoff
- Heated dryer stage (in place of blowoff)
- Prewash cycle
- Recirculated rinse

Manufacturer reserves the right of modification without any prior notice.