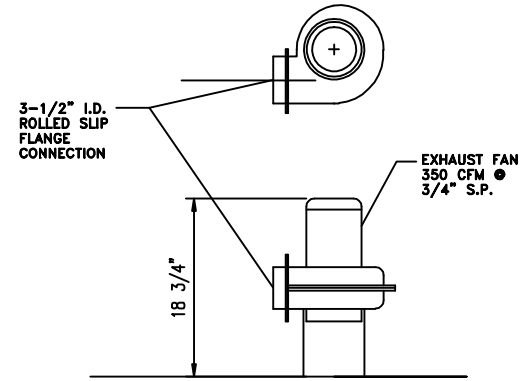


PLAN VIEW



EXHAUST FAN DETAIL OPTIONAL

**SPECIFICATIONS**

POWER.....VOLTS-3PHASE-60 HERTZ  
 208/240/480 VOLTS AVAILABLE  
 PUMP.....10 HP 3450 RPM @ 55 PSI  
 WASH TANK CAPACITY.....30 GALLONS  
 STEAM LINE PRESSURE.....10 P.S.I. MINIMUM  
 40 P.S.I. MAXIMUM  
 STEAM CONSUMPTION.....32 LBS. PER HOUR  
 FRESH WATER RINSE.....RATE OF FLOW REQUIRED  
 MINIMUM 6.6 G.P.M. @ 20 P.S.I.G.  
 LINE PRESSURE @ 180°-195° F  
 FRESH WATER RINSE CONSUMPTION.....MINIMUM 3.3 GALLONS PER  
 30 SECOND RINSE CYCLE.  
 SHIPPING WEIGHT.....1200 LBS.  
 INSTALLED WEIGHT.....1600 LBS.

**ELECTRICAL REQUIREMENTS**

**NOTE:**

THE FOLLOWING FIGURES DO NOT INCLUDE  
 A SAFETY FACTOR FOR DETERMINING  
 DISCONNECT SIZE.

VOLT	KW	PHASE	FULL LOAD AMPS
208	10.4	3	28.9
240	10.8	3	26.1
480	10.8	3	13.0

THE EXHAUST FAN IS A FACTORY INSTALLED ACCESSORY. THE MODEL FLC-10 EMPLOYS A 1/3 HP EXHAUST FAN. THE USE OF THE EXHAUST FAN DOES NOT INCREASE THE CURRENT ELECTRICAL RATING OF THE DISHWASHER AS THE EXHAUST FAN IS ONLY ENERGIZED AFTER THE WASH AND RINSE CYCLES HAVE BEEN COMPLETED.

**CUSTOMER UTILITY CONNECTION**

SYM	DESCRIPTION
A	1 1/4" HOT WATER RINSE - FEMALE PIPE CONNECTION
B	1" DRAIN LINE - FEMALE PIPE CONNECTION
C	3/4" STEAM INLET - FEMALE PIPE CONNECTION
D	3/4" STEAM CONDENSATE - FEMALE PIPE CONNECTION
E	CUSTOMER ELECTRICAL CONNECTION - CAN BE CONNECTED ON TOP, BOTTOM, OR BACKSIDE OF THE CONTROL PANEL.
F	1 1/2" STEAM SUPPLY - FEMALE PIPE CONNECTION
G	3/4" CONDENSATE - FEMALE PIPE CONNECTION

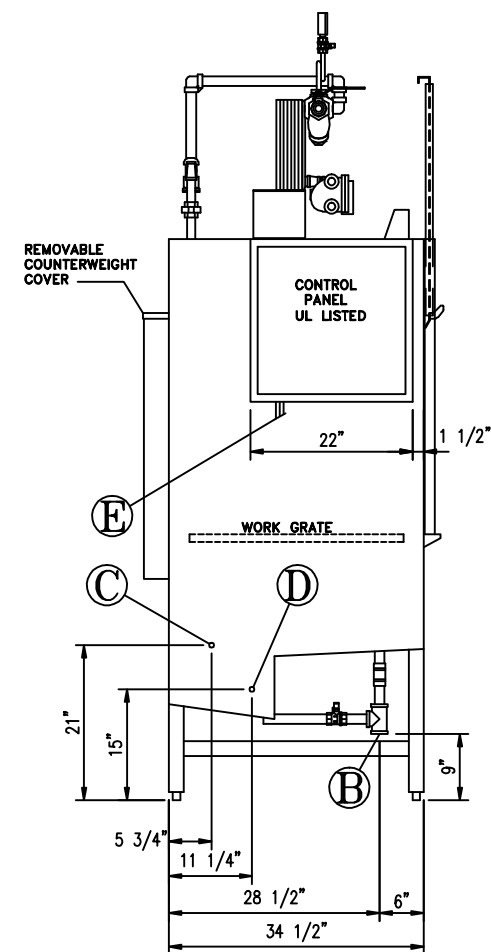
**CAUTION:** TO MAINTAIN PROPER HEATING REQUIREMENTS WHEN USING A FAN PROVIDED BY OTHERS, THE FAN CIRCUIT NEEDS TO BE DESIGNED TO NOT OPERATE DURING THE NORMAL MACHINE CYCLE. THE FAN SHOULD ONLY ACTIVATE WHEN THE DOOR(S) ARE OPENED.

**NOTE:** For extended life of the steam booster, a maximum of 15-PSI steam inlet pressure is required. We highly recommend that a steam pressure-reducing valve be placed in front of the booster's steam inlet connection. The reducing valve is to be provided and installed by others.

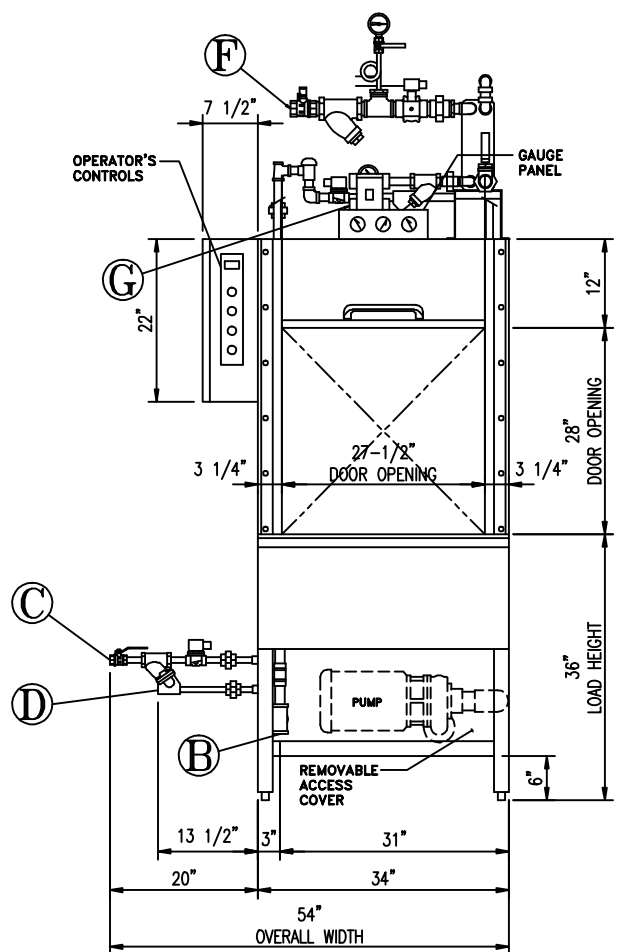
**STEAM COIL HEATED TANK WITH STEAM RINSE WATER BOOSTER ON ROOF**



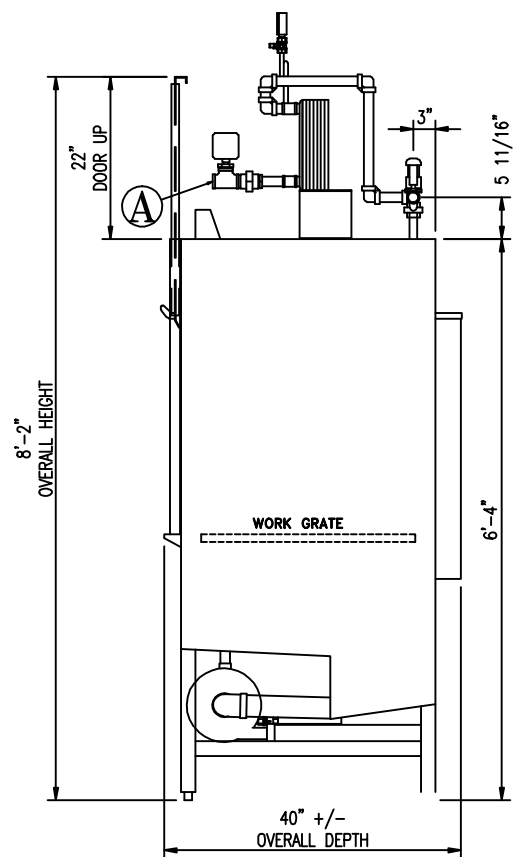
**NOTE:** MANUFACTURER RESERVES THE RIGHT OF MODIFICATIONS WITHOUT PRIOR NOTICE.



LEFT SIDE ELEVATION



FRONT ELEVATION



RIGHT SIDE ELEVATION

CONCEPT DRAWING FOR SALES AND ESTIMATING PURPOSES ONLY

SERIAL#	WORK ORDER:
<p>CONFIDENTIAL PROPRIETARY NOTICE</p> <p>THIS DRAWING, THESE SPECIFICATIONS, AND THE IDEAS CONTAINED HEREIN ARE THE EXCLUSIVE PROPERTY OF ARMOR METAL GROUP ("AMG") AND SHALL BE RETURNED UPON DEMAND. NO PERSON SHALL COPY, USE OR DISCLOSE THIS DRAWING, THESE SPECIFICATIONS, OR THE IDEAS CONTAINED HEREIN WITHOUT THE EXPRESS CONSENT OF AMG.</p> <p>THE ARMOR GROUP www.armormetal.com</p>	
<p><b>ALVEY WASHING EQUIPMENT</b> AN ARMOR GROUP COMPANY MASON, OHIO</p> <p>TITLE Dimension sheet for Model FLC-10 FOR Steam Coil Heated Tank with Booster</p> <p>DATE 9/9/2009 DWN. BY GF SCALE None DWG. NO. 3RD ANGLE CHK. BY _____ FLC10-SCHB</p>	

4-Mason/Sales/Estimating/Quoles/Products/Boosters/View/View catalog drawings 2009/View catalog drawings 2009/FLC-10 Steam Coil Heat 2009.dwg