

3'-0" SUGGESTED KEEP CLEAR PERIMETER

PLAN VIEW

**SPECIFICATIONS**

POWER: \_\_\_\_\_ VOLTS-3 PHASE-60 HERTZ  
 208/240/480 VOLTS AVAILABLE  
 PUMP: 15 H.P. 240 G.P.M. @ 56 P.S.I.G.  
 WASH TANK CAPACITY: 60 GALLONS APPROXIMATE  
 STEAM LINE PRESSURE: 10 P.S.I.G. MINIMUM  
 15 P.S.I.G. MAXIMUM  
 STEAM CONSUMPTION: 362 LBS. PER HOUR BASED  
 ON 10 P.S.I. LINE PRESSURE  
 FRESH WATER RINSE: RATE OF FLOW REQUIRED  
 MINIMUM 9.1 G.P.M. @ 20 P.S.I.G.  
 LINE PRESSURE @ 120° F.  
 FRESH WATER RINSE CONSUMPTION: MINIMUM 9.1 GALLONS PER  
 60 SECOND RINSE CYCLE  
 SHIPPING WEIGHT: 2,950 LBS. APPROXIMATE  
 INSTALLED WEIGHT: 2,450 LBS. APPROXIMATE  
 OPERATING WEIGHT: 3,010 LBS. APPROXIMATE

**ELECTRICAL REQUIREMENTS**

**NOTE:** THE FOLLOWING FIGURES DO NOT INCLUDE A SAFETY FACTOR FOR DETERMINING DISCONNECT SIZE.

**BASE MACHINE WITH EXHAUST FAN**

VOLTS	KW	PHASE	FULL LOAD AMPS
208	TBD	3	45.1
240	TBD	3	41.0
480	TBD	3	20.5

**CUSTOMER UTILITY CONNECTIONS**

- A) 1-1/2" MANUAL DRAIN - FEMALE PIPE CONNECTION
- B) 1-1/2" AUTOMATIC DRAIN - FEMALE PIPE CONNECTION
- C) 1" WATER FILL - FEMALE PIPE CONNECTION
- D) 8" EXHAUST FAN - FLANGE CONNECTION
- E) ELECTRICAL CONNECTION
- F) 1-1/2" STEAM INLET - FEMALE PIPE CONNECTION
- G) 3/4" STEAM CONDENSATE - FEMALE PIPE CONNECTION

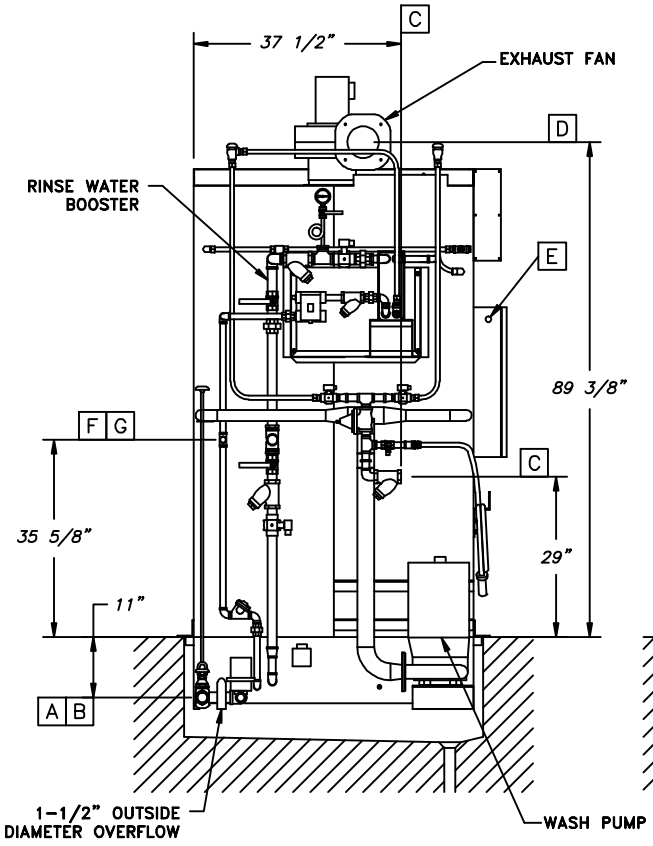
**NOTE:** MANUFACTURER RESERVES THE RIGHT OF MODIFICATIONS WITHOUT PRIOR NOTICE.

**NOTE:** For extended life of the steam booster, a maximum of 15-PSI steam inlet pressure is required. We highly recommend that a steam pressure-reducing valve be placed in front of the booster's steam inlet connection. The reducing valve is to be provided and installed by others.

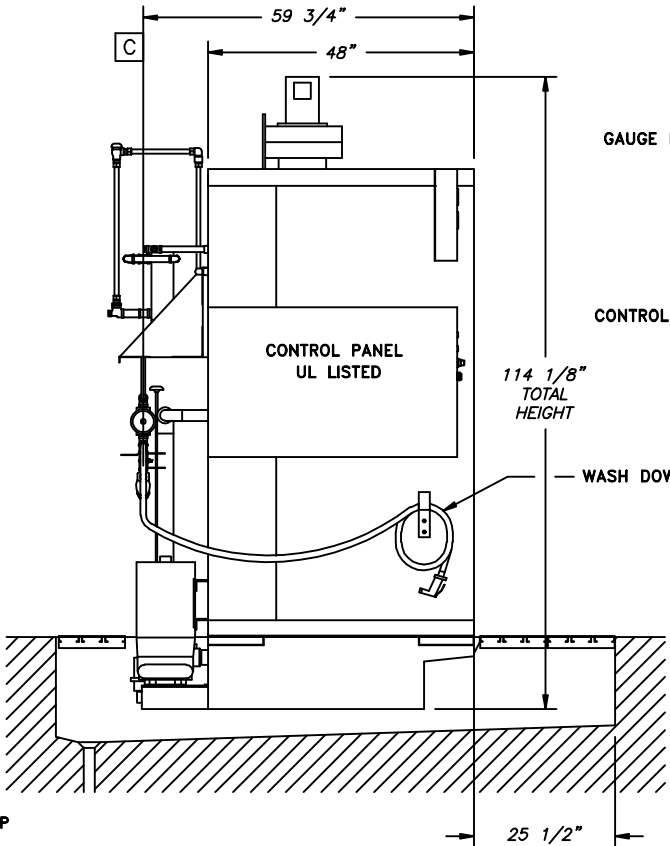
**STEAM COIL HEATED TANK WITH STEAM RINSE WATER BOOSTER ON ROOF**



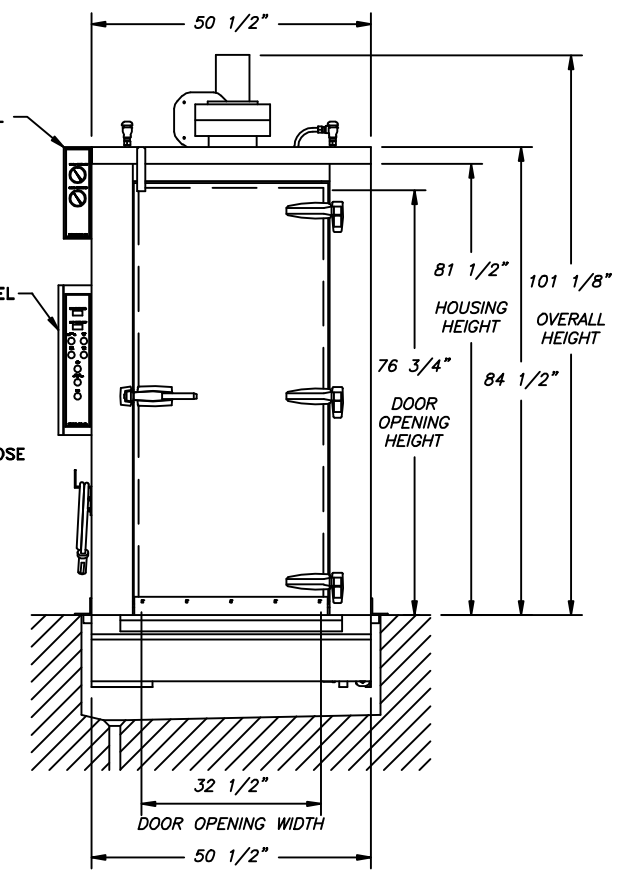
**NOTE:** MANUFACTURER RESERVES THE RIGHT OF MODIFICATIONS WITHOUT PRIOR NOTICE.



BACK VIEW



LEFT SIDE VIEW



FRONT VIEW

**CONCEPT DRAWING FOR SALES AND ESTIMATING PURPOSES ONLY**

SERIAL#	WORK ORDER:
<p>CONFIDENTIAL PROPRIETARY NOTICE</p> <p>ALVEY WASHING EQUIPMENT AN ARMOR GROUP COMPANY MASON, OHIO</p> <p>TITLE Dimension sheet for Model KS-48 FOR Steam Coil Heated Tank with Booster</p> <p>DATE 9/9/2009 DWN. BY GF SCALE None DWG. NO. 3RD ANGLE CHK. BY KS48-SCHB</p> <p>THE ARMOR GROUP www.armormetal.com</p>	

Mason Sales/Estimating/Quotes (Products) Status (Inventory) catalog drawings 2009 (KS-48 Steam Coil Heat 2005) 2005