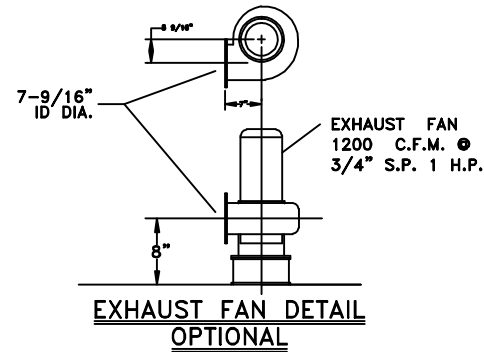
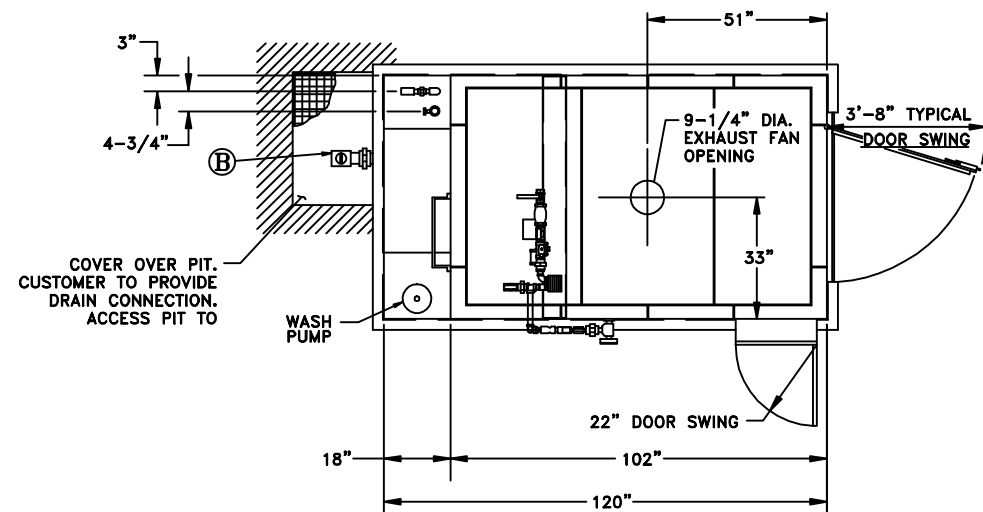


PLAN VIEW



SPECIFICATIONS

POWER..... VOLTS-3 PHASE-60 HERTZ
 208/240/480 VOLTS AVAILABLE
 PUMP..... 10 H.P. 3450 R.P.M. @ 35 P.S.I.G.
 WASH TANK CAPACITY..... 440 GALLONS
 FRESH WATER RINSE..... RATE OF FLOW REQUIRED
 MINIMUM 21 G.P.M. @ 20 P.S.I.G.
 LINE PRESSURE @ 120' F
 FRESH WATER RINSE
 CONSUMPTION..... MINIMUM 10.5 GALLONS PER
 30 SECOND RINSE CYCLE.
 SHIPPING WEIGHT(Including Crating)..... 4000 LBS.
 INSTALLED WEIGHT(Less Solution)..... 3500 LBS.
 OPERATING WEIGHT(With Solution)..... 7200 LBS.
 STEAM LINE PRESSURE..... 10 P.S.I. MINIMUM
 40 P.S.I. MAXIMUM
 STEAM CONSUMPTION..... 460 LBS. PER HOUR
 STEAM BOOSTER
 LINE PRESSURE..... 10 P.S.I. MIN. - 15 P.S.I. MAX.
 CONSUMPTION..... 660 LBS. PER HOUR

ELECTRICAL REQUIREMENTS

NOTE:

THE FOLLOWING FIGURES DO NOT INCLUDE A SAFETY FACTOR FOR DETERMINING DISCONNECT SIZE. IF OPTIONAL EXHAUST FAN IS DESIRED, ADD OPTIONAL EXHAUST FAN FULL LOAD AMPS TO BASE MACHINE FULL LOAD AMPS TO OBTAIN TOTAL CONTROL PANEL CONNECTION FULL LOAD AMPS.

BASE MACHINE			
VOLT	KW	PHASE	FULL LOAD AMPS
208	10.4	3	28.9
240	10.8	3	26.1
480	10.8	3	13.0

OPTIONAL EXHAUST FAN			
VOLT	KW	PHASE	FULL LOAD AMPS
208	1.3	3	3.6
240	1.3	3	3.2
480	1.2	3	1.5

CUSTOMER'S UTILITY CONNECTIONS

SYM	DESCRIPTION
A	1 1/4" HOT WATER RINSE - FEMALE PIPE CONNECTION
B	2" DRAIN LINE CONNECTION
C	2" STEAM INLET - FEMALE PIPE CONNECTION
D	3/4" STEAM CONDENSATE - FEMALE PIPE CONNECTION
E	CUSTOMER'S ELECTRICAL CONNECTION
F	1" WATER FILL - FEMALE PIPE CONNECTION
G	1 1/2" STEAM BOOSTER INLET - FEMALE PIPE CONNECTION
H	3/4" STEAM BOOSTER CONDENSATE - FEMALE PIPE CONNECTION

CAUTION: TO MAINTAIN PROPER HEATING REQUIREMENTS WHEN USING A FAN PROVIDED BY OTHERS, THE FAN CIRCUIT NEEDS TO BE DESIGNED TO NOT OPERATE DURING THE NORMAL MACHINE CYCLE. THE FAN SHOULD ONLY ACTIVATE WHEN THE DOOR(S) ARE OPENED.

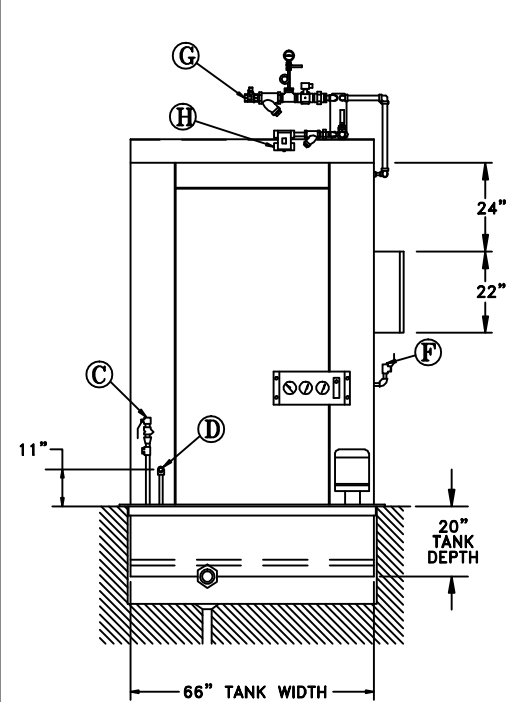
NOTE: For extended life of the steam booster, a maximum of 15-PSI steam inlet pressure is required. We highly recommend that a steam pressure-reducing valve be placed in front of the booster's steam inlet connection. The reducing valve is to be provided and installed by others.

STEAM COIL HEATED TANK WITH STEAM RINSE WATER BOOSTER ON ROOF

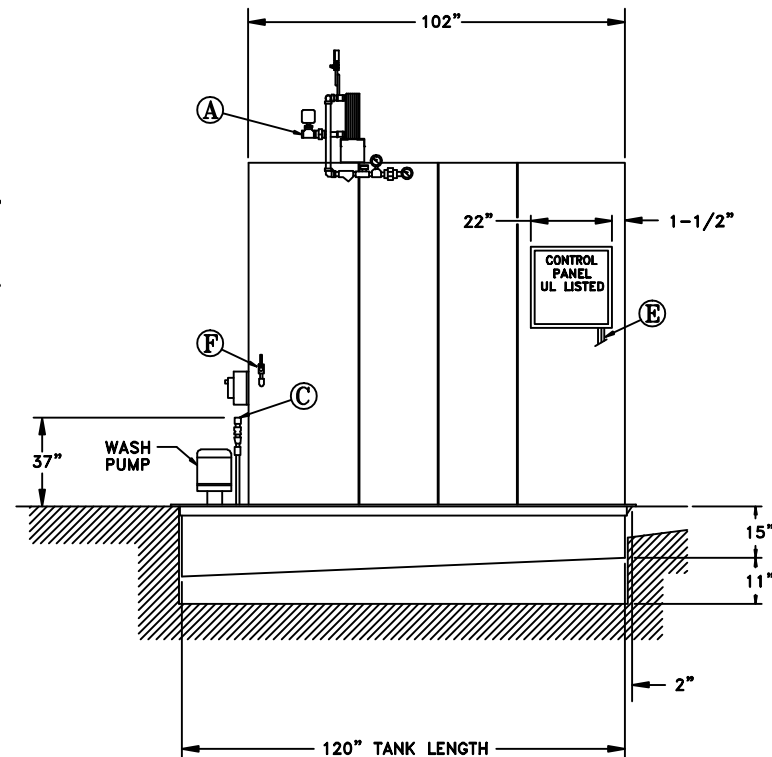


NOTE: MANUFACTURER RESERVES THE RIGHT OF MODIFICATIONS WITHOUT PRIOR NOTICE.

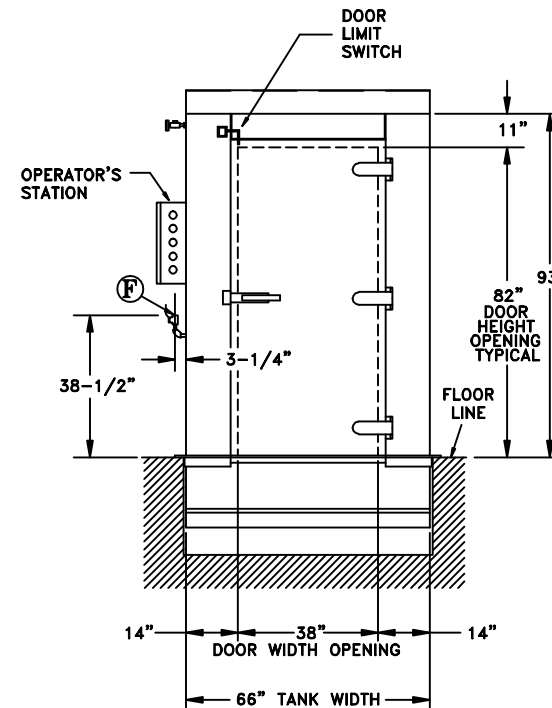
END VIEW



SIDE ELEVATION



LOAD END VIEW



CONCEPT DRAWING FOR SALES AND ESTIMATING PURPOSES ONLY

SERIAL#	WORK ORDER:
<p>CONFIDENTIAL PROPRIETARY NOTICE</p> <p>THIS DRAWING, THESE SPECIFICATIONS, AND THE IDEAS CONTAINED HEREIN ARE THE EXCLUSIVE PROPERTY OF ARMOR METAL GROUP ("AMG") AND SHALL BE RETURNED UPON DEMAND. NO PERSON SHALL COPY, USE OR DISCLOSE THIS DRAWING, THESE SPECIFICATIONS, OR THE IDEAS CONTAINED HEREIN WITHOUT THE EXPRESS CONSENT OF AMG.</p> <p>THE ARMOR GROUP www.armormetal.com</p>	
<p>ALVEY WASHING EQUIPMENT AN ARMOR GROUP COMPANY MASON, OHIO</p> <p>TITLE <u>Dimension sheet for Model KS-88</u> FOR <u>Steam Coil Heated Tank with Booster</u></p> <p>DATE <u>9/9/2009</u> DWN. BY <u>GF</u> SCALE <u>None</u> DWG. NO. 3RD ANGLE CHK. BY _____ <u>KS88-SCHB</u></p>	